



複層型自潤軸承 LFB - P.3



複層型凸緣自潤軸承 LFF - P.5



複層型止推自潤軸承 LFW - P.6



埋入型自潤軸承 SPB - P.7

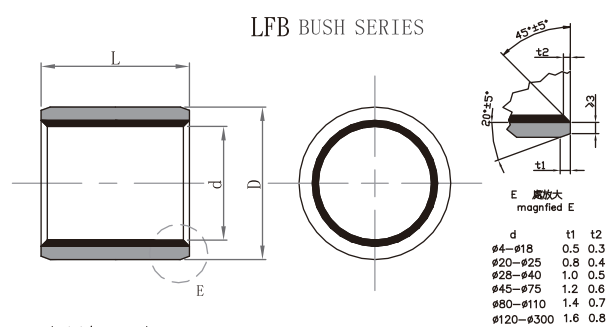


埋入型凸緣自潤軸承 SPF - P.8



埋入型自潤軸承 SPW - P.9

# 複層型自潤軸承LFB



產品標示法 : LFB - dxL (LFB-內徑 X 長度)

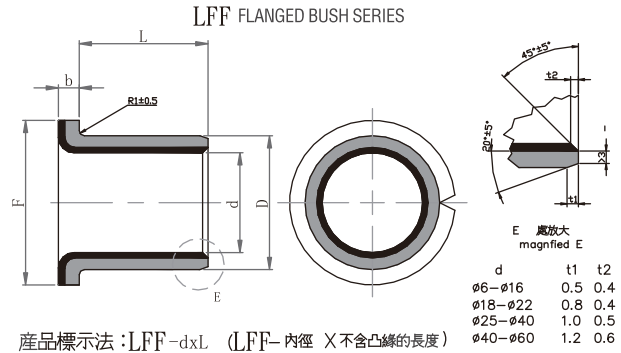
內徑 $\varphi d$	外徑 $\varphi D$	軸徑 shaft	孔座 H7 housing	L 0 -0.3													
				4	5	6	8	10	12	15	20	25	30	40	50		
4	6	4 -0.013 -0.028	6 +0.015 0	0404	0405	0406	0408										
5	7	5 -0.013 -0.028	7 +0.015 0	0504	0505	0506	0508										
6	8	6 -0.013 -0.028	8 +0.015 0			0606	0608	0610									
8	10	8 -0.013 -0.028	10 +0.015 0			0806	0808	0810	0812	0815							
10	12	10 -0.016 -0.034	12 +0.018 0			1006	1008	1010	1012	1015							
12	14	12 -0.016 -0.034	14 +0.018 0			1206	1208	1210	1212	1215	1220	1225					
13	15	13 -0.016 -0.034	15 +0.018 0					1310	1312	1315	1320						
14	16	14 -0.016 -0.034	16 +0.018 0					1410	1412	1415	1420	1425					
15	17	15 -0.016 -0.034	17 +0.018 0					1510	1512	1515	1520	1525					
16	18	16 -0.016 -0.034	18 +0.018 0					1610	1612	1615	1620	1625					
17	19	17 -0.016 -0.034	19 +0.018 0					1710	1712		1720						
18	20	18 -0.020 -0.041	20 +0.021 0					1810	1812	1815	1820	1825					
20	23	20 -0.020 -0.041	23 +0.021 0					2010	2012	2015	2020	2025	2030				
22	25	22 -0.020 -0.041	25 +0.021 0					2210	2212	2215	2220	2225	2230				
24	27	24 -0.020 -0.041	27 +0.021 0							2415	2420	2425	2430				
25	28	25 -0.020 -0.041	28 +0.021 0					2510	2512	2515	2520	2525	2530	2540	2550		
28	32	28 -0.020 -0.041	32 +0.025 0							2815	2820	2825	2830	2840			
30	34	30 -0.025 -0.050	34 +0.025 0							3012	3015	3020	3025	3030			
32	36	32 -0.025 -0.050	36 +0.025 0									3220		3230	3240		
35	39	35 -0.025 -0.050	39 +0.025 0							3512	3515	3520	3525	3530	3540	3550	
38	42	38 -0.025 -0.050	42 +0.025 0								3815			3830	3840		
40	44	40 -0.025 -0.050	44 +0.025 0							4012	4015	4020	4025	4030	4040	4050	

# 複層型自潤軸承 LFB

自潤軸承

內徑 $\varphi d$	外徑 $\varphi D$	軸徑 shaft	孔座 H7 housing	L 0 -0.3											
				20	25	30	40	50	60	70	80	90	100	120	
45	50	45 -0.025 -0.050	50 +0.025 0	4520	4525	4530	4540	4550							
50	55	50 -0.030 -0.060	55 +0.030 0	5020		5030	5040	5050	5060						
55	60	55 -0.030 -0.060	60 +0.030 0			5530	5540	5550	5560						
60	65	60 -0.030 -0.060	65 +0.030 0			6030	6040	6050	6060	6070					
65	70	65 +0.036 +0.005	70 +0.030 0			6530	6540	6550	6560	6570					
70	75	70 +0.036 +0.005	75 +0.030 0				7040	7050	7060	7070	7080				
75	80	75 +0.036 +0.005	80 +0.030 0			7530	7540	7550	7560	7570	7580				
80	85	80 +0.036 +0.005	85 +0.035 0				8040	8050	8060	8070	8080		80100		
85	90	85 +0.035 0	90 +0.035 0				8540	8550	8560		8580		85100		
90	95	90 +0.035 0	95 +0.035 0				9040	9050	9060		9080		90100		
95	100	95 +0.035 0	100 +0.035 0					9550	9560		9580		95100		
100	105	100 +0.035 0	105 +0.035 0					10050	10060	10070	10080		100100	100120	
105	110	105 +0.035 0	110 +0.035 0					10550	10560	10570	10580			105120	
110	115	110 +0.035 0	115 +0.035 0					11050	11060	11070	11080		110100	110120	
120	125	120 +0.035 0	125 +0.035 0					12050	12060		12080		120100		
125	130	125 +0.035 -0.005	130 +0.040 0						12560				125100	125120	
130	135	130 +0.035 -0.005	135 +0.040 0					13050	13060		13080		130100		
140	145	140 +0.035 -0.005	145 +0.040 0					14050	14060		14080		140100		
150	155	150 +0.035 -0.005	155 +0.040 0					15050	15060		15080		150100		
160	165	160 +0.035 -0.005	165 +0.040 0					16050	16060		16080		160100	160120	
180	185	180 0 -0.046	185 +0.046 0								18080		180100		
190	195	190 0 -0.046	195 +0.046 0								19080		190100		
200	205	200 0 -0.046	205 +0.046 0						20060		20080		200100		
220	225	220 0 -0.046	225 +0.052 0								22080		220100		
250	255	250 0 -0.052	255 +0.052 0								25080		250100		
260	265	260 0 -0.052	265 +0.052 0								26080		260100		
280	285	280 0 -0.052	285 +0.052 0								28080		280100		
300	305	300 0 -0.052	305 +0.052 0								30080		300100		

# 複層型凸緣自潤軸承LFF

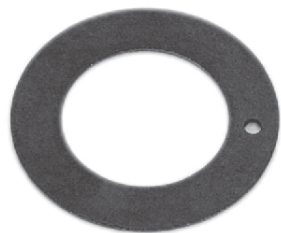


內徑 $\varphi d$	外徑 $\varphi D$	凸緣外徑 $\varphi F \pm 0.5$	凸緣厚度 $b - 0.2$	$L \pm 0.25$												
				4	5	6	7	8	10	12	15	20	25	30	40	
5	7	10	1	0504	0505	0506										
6	8	12	1		0605	0606	0607	0608								
7	9	13	1		0705		0707									
8	10	15	1			0806		0808	0810	0812						
10	12	18	1			1006	1007	1008	1010	1012	1015					
12	14	20	1			1206	1207	1208	1210	1212	1215					
14	16	22	1						1410	1412	1415					
15	17	23	1						1510	1512	1515	1520				
16	18	24	1						1610		1615	1620				
18	20	26	1						1810	1812	1815	1820				
20	23	31	1.5						2010	2012	2015	2020	2025			
22	25	32	1.5						2210	2212	2215	2220				
25	28	35	1.5						2510	2512	2515	2520	2525			
30	34	42	2							3012	3015	3020	3025	3030		
35	39	47	2									3520	3525	3530	3540	
40	44	53	2							4012		4020	4025	4030	4040	
45	50	60	2.5									4520	4525	4530	4540	
50	55	65	2.5									5020		5030	5040	
55	60	70	2.5											5530	5540	
60	65	75	2.5											6030	6040	

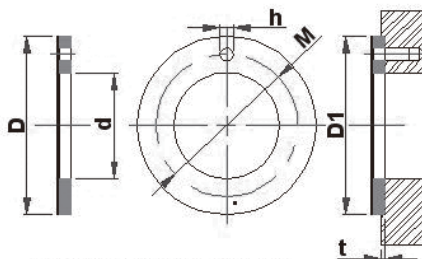
配合軸公差 f7, 孔座公差 H7.

Installed with f7 journals and H7 housing bore

## 複層型止推自潤軸承 LFW



LFW THRUST WASHERS STANDARD



產品標示法:LFW-d(LFW-內徑)

自潤軸承

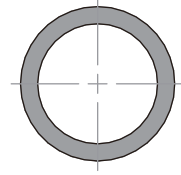
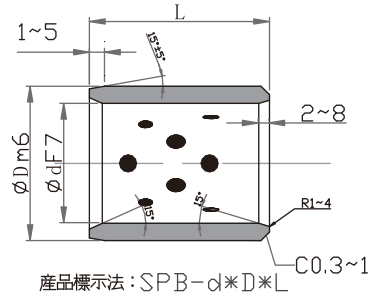
規格 Designation	墊片尺寸 Size of washer				安裝尺寸 Size of installation		
	$\varphi d$	$\varphi D$	T	M	h	t	D1
	+0.25 0	0 -0.25	0 -0.05	+0.12 -0.12	+0.4 +0.1	+0.2 -0.2	+0.12 0
LFW08	8	16	1.5	12	1	1	16
LFW10	10	20	1.5	15	1.5	1	20
LFW12	12	24	1.5	18	1.5	1	24
LFW14	14	26	1.5	20	2	1	26
LFW16	16	30	1.5	23	2	1	30
LFW18	18	32	1.5	25	2	1	32
LFW20	20	36	1.5	28	3	1	36
LFW22	22	38	1.5	30	3	1	38
LFW24	24	42	1.5	33	3	1	42
LFW26	26	44	1.5	35	3	1	44
LFW28	28	48	1.5	38	4	1	48
LFW32	32	54	1.5	43	4	1	54
LFW38	38	62	1.5	50	4	1	62
LFW42	42	66	1.5	54	4	1	66
LFW48	48	74	2	61	4	1.5	74
LFW52	52	78	2	65	4	1.5	78
LFW62	62	90	2	76	4	1.5	90

## PFP 自潤滑板標準尺寸

### PFP DRYMET PLATE STANDARD

規格 TYPE	長度 Length $\pm 1$	寬度 Width $\pm 1$	厚度 Thickness-0.04
LFP-10125	500	125	1.0
LFP-15125	500	125	1.5
LFP-20140	500	140	2.0
LFP-25140	500	140	2.5

# 埋入型自潤軸承 SPB



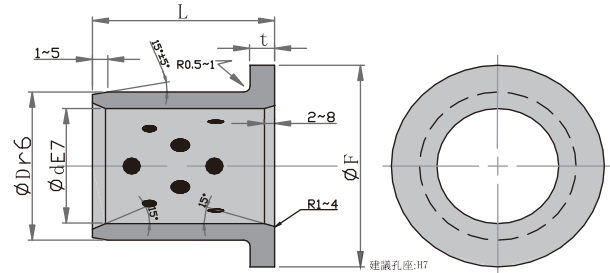
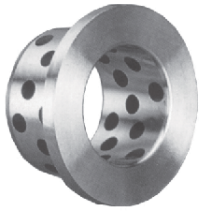
產品標示法: SPB- $\phi d$ \* $\phi D$ \*L  
(SPB-內徑\*外徑\*長度)

軸心使用建議  
一般高荷重用:  $\phi d8$   
一般輕荷重用:  $\phi d7$   
高精度使用:  $\phi d7$

自潤軸承

$\phi d$	$\phi D$	L																	單位: mm		
		8	10	12	15	16	20	25	30	35	40	45	50	60	70	80	100	120		130	140
8	12	●	●	●	●																
10	14	●	●	●	●		●														
12	18		●	●	●	●	●	●													
13	19		●		●		●														
14	20		●	●	●		●	●	●												
15	21		●	●	●	●	●	●	●												
16	22		●	●		●	●	●	●	●	●										
18	24				●	●	●	●	●	●	●	●	●								
20	28				●	●	●	●	●	●	●	●	●	●							
20	30					●	●	●	●	●	●	●	●	●	●						
25	33					●	●	●	●	●	●	●	●	●	●						
25	35					●	●	●	●	●	●	●	●	●	●	●					
30	38					●	●	●	●	●	●	●	●	●	●	●					
30	40					●	●	●	●	●	●	●	●	●	●	●					
31.5	40					●	●	●	●	●	●	●	●	●	●	●					
35	44							●	●	●	●	●	●	●	●	●					
35	45							●	●	●	●	●	●	●	●	●					
40	50					●	●	●	●	●	●	●	●	●	●	●	●				
40	55					●	●	●	●	●	●	●	●	●	●	●	●				
45	55							●	●	●	●	●	●	●	●	●					
45	56							●	●	●	●	●	●	●	●	●					
45	60							●	●	●	●	●	●	●	●	●	●				
50	60							●	●	●	●	●	●	●	●	●	●				
50	62							●	●	●	●	●	●	●	●	●	●				
50	65							●		●	●	●	●	●	●	●	●	●			
55	70									●	●	●	●	●	●	●	●				
60	74									●	●	●	●	●	●	●	●	●			
60	75									●	●	●	●	●	●	●	●	●			
63	76											●	●	●	●	●	●	●			
65	80												●	●	●	●	●	●			
70	85									●	●	●	●	●	●	●	●	●			
70	90												●	●	●	●	●	●			
75	90													●	●	●	●	●			
75	95														●	●	●	●			
80	96															●	●	●	●		
80	100															●	●	●	●		●
90	110																●	●	●		
100	120																●	●	●		●
110	130																	●	●		
120	140																		●		●
125	145																			●	
130	150																				●
140	160																				●
150	170																				●
160	180																				●

## 埋入型凸緣自潤軸承 SPF



產品標示法 : SPF-dxL  
(SPF - 內徑 x 含凸緣長度)

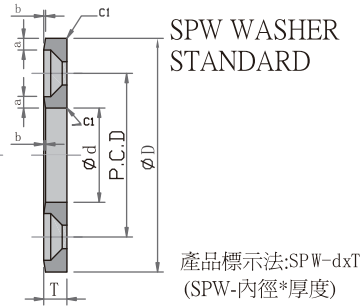
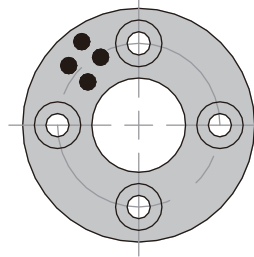
建議孔座:H7  
軸心使用建議  
一般高荷重用:d8  
一般輕荷重用:e7  
高精度使用:f7

自潤軸承

$\phi d$	$\phi D$	$\phi F$	$t$	單位mm											
				L											
				-0.1											
				-0.3											
				10	15	20	25	30	35	40	50	60	67.5	80	100
10	+0.040 +0.025	14	+0.034 +0.023	22	2	1010	1015	1020							
12	+0.050 +0.032	18	+0.034 +0.023	25	3	1210	1215	1220							
13	+0.050 +0.032	19	+0.041 +0.028	26	3	1310	1315	1320							
14	+0.050 +0.032	20	+0.041 +0.028	27	3		1415	1420							
15	+0.050 +0.032	21	+0.041 +0.028	28	3		1515	1520	1525	1530					
16	+0.050 +0.032	22	+0.041 +0.028	29	3		1615	1620	1625	1630					
20	+0.061 +0.040	30	+0.041 +0.028	40	5		2015	2020	2025	2030		2040			
25	+0.061 +0.040	35	+0.050 +0.034	45	5		2515	2520	2525	2530		2540			
30	+0.061 +0.040	40	+0.050 +0.034	50	5			3020	3025	3030	3035	3040	3050		
31.5	+0.075 +0.050	40	+0.050 +0.034	50	5			3120		3130	3135				
35	+0.075 +0.050	45	+0.050 +0.034	60	5			3520		3530		3540	3550		
40	+0.075 +0.050	50	+0.050 +0.034	65	5			4020		4030		4040	4050		
45	+0.075 +0.050	55	+0.060 +0.041	70	5					4530		4540	4550	4560	
50	+0.075 +0.050	60	+0.060 +0.041	75	5					5030		5040	5050	5060	
55	+0.090 +0.060	65	+0.060 +0.041	80	5							5540		5560	
60	+0.090 +0.060	75	+0.062 +0.043	90	7.5							6040	6050	6060	6080
63	+0.090 +0.060	75	+0.062 +0.043	85	7.5									6367	
70	+0.090 +0.060	85	+0.073 +0.051	105	7.5								7050		7080
75	+0.090 +0.060	90	+0.073 +0.051	110	7.5									7560	
80	+0.090 +0.060	100	+0.073 +0.051	120	10									8060	8080 80100
90	+0.107 +0.072	110	+0.076 +0.054	130	10									9060	9080
100	+0.107 +0.072	120	+0.076 +0.054	150	10										10080 100100
120	+0.107 +0.072	140	+0.088 +0.063	170	10										12080 120100



## 埋入型自潤軸承 SPW



尺寸 (mm)		T <sup>-0</sup> <sub>-0.1</sub>	裝配孔			倒角	
內徑 φd	外徑 φD		P.C.D.	W	使用埋頭螺栓	a	b
10.2	30	-1003	20	2	M3	2	0.3
12.2	40	-1203	28	2	M3	2	0.4
12.2	40	-1203N	無埋頭螺栓孔			2	0.4
13.2	40	-1303	28	2	M3	2	0.4
14.2	40	-1403	28	2	M3	2	0.4
15.2	50	-1503	35	2	M3	2	0.4
16.2	50	-1603	35	2	M3	2	0.4
16.2	50	-1603N	無埋頭螺栓孔			2	0.4
18.2	50	-1803	35	2	M3	2	0.4
20.2	50	-2005	35	2	M5	2.5	0.4
25.2	55	-2505	40	2	M5	2.5	0.4
30.2	60	-3005	45	2	M5	2.5	0.4
35.2	70	-3505	50	2	M5	2.5	0.4
40.2	80	-4007	60	2	M6	3	0.5
45.2	90	-4507	70	2	M6	3	0.5
50.3	100	-5008	75	4	M6	4	0.6
55.3	110	-5508	85	4	M6	4	0.6
60.3	120	-6008	90	4	M8	5	0.8
65.3	125	-6508	95	4	M8	5	0.8
70.3	130	-7010	100	4	M8	5	0.8
75.3	140	-7510	<b>110</b>	4	M8	5	0.8
80.3	150	-8010	120	4	M8	5	0.8
90.5	170	-9010	140	4	M10	5	0.8
100.5	190	-10010	160	4	M10	5	0.8
120.5	200	-12010	175	4	M10	5	0.8